

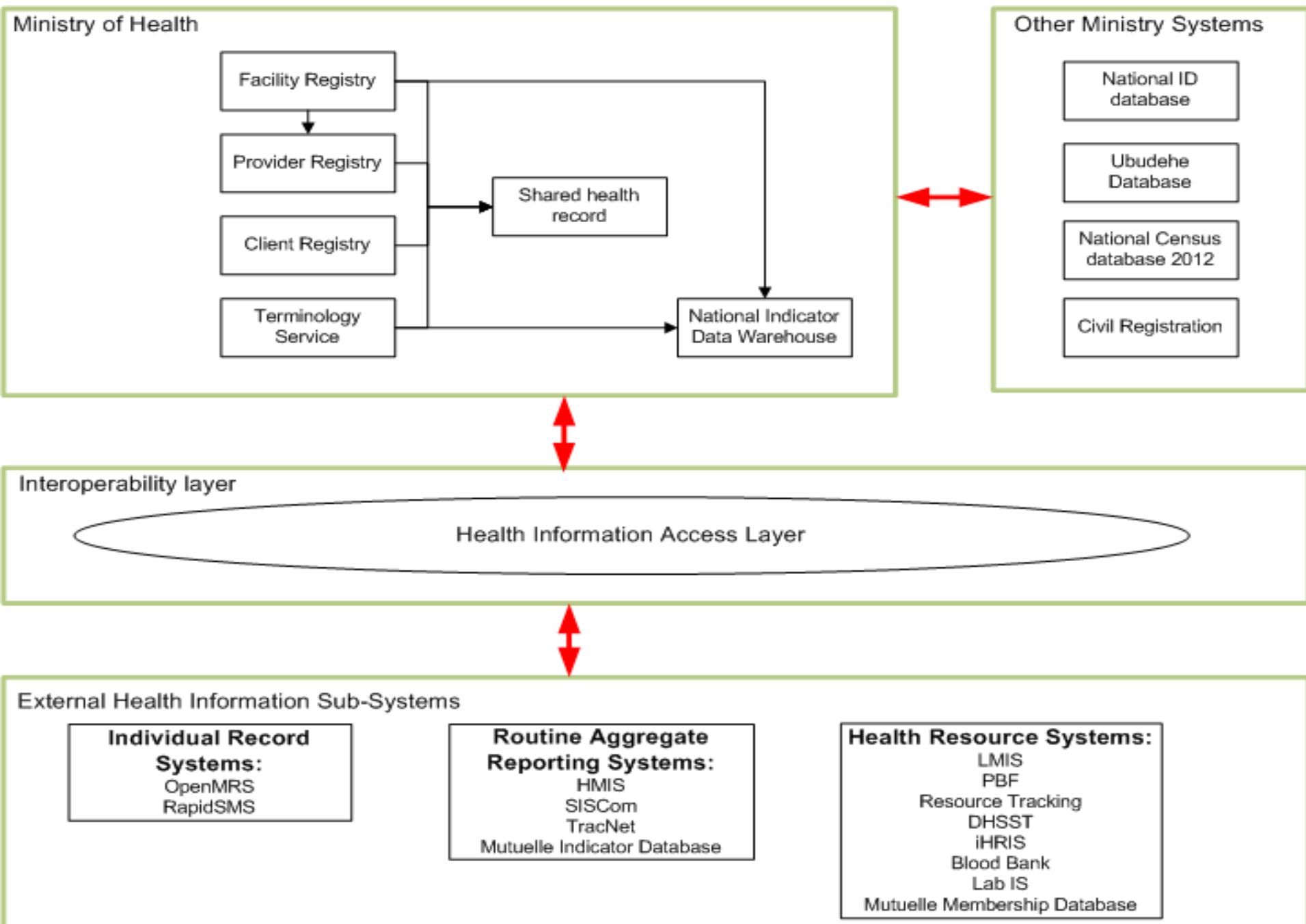


Ministry of Health

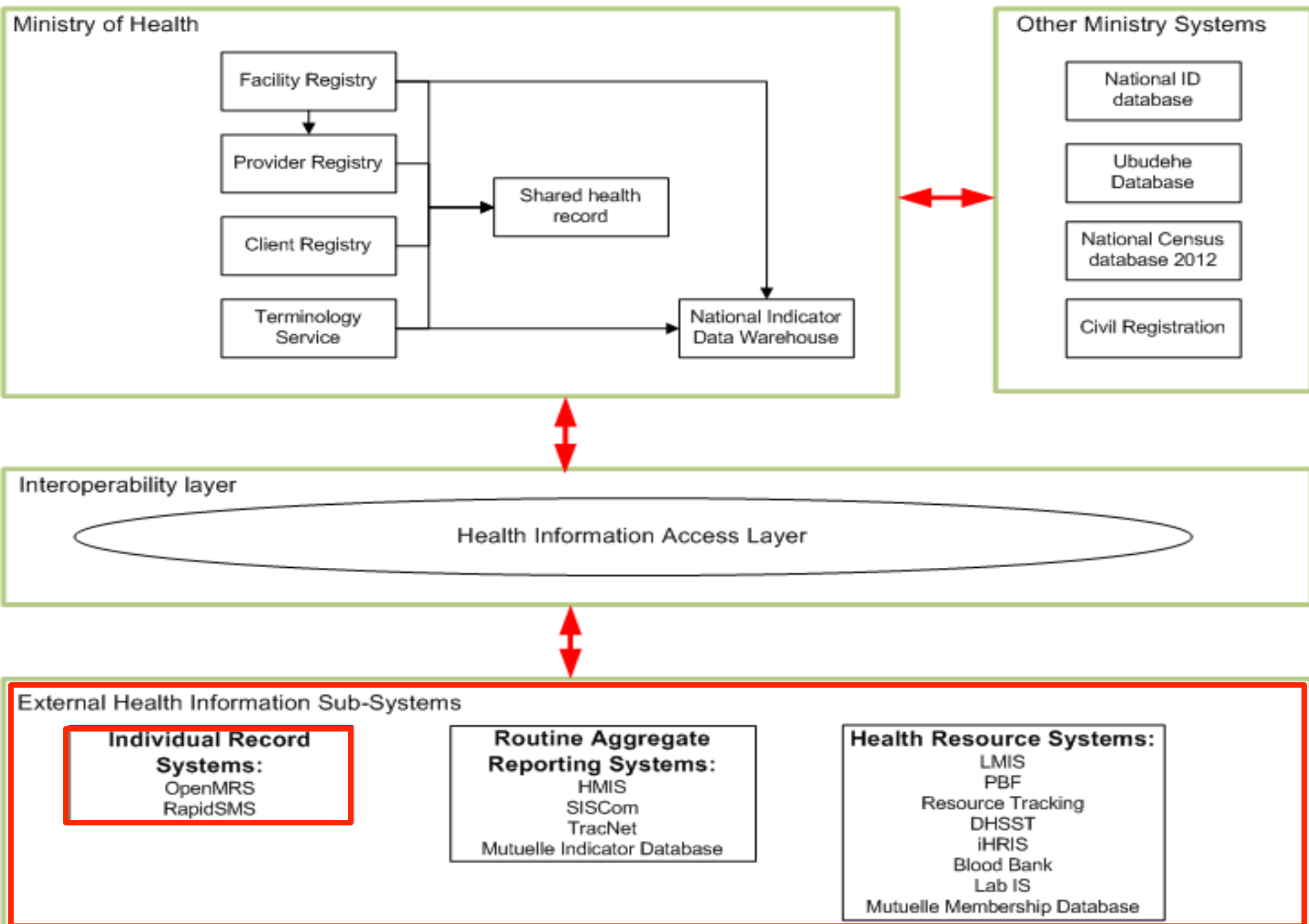
Update on eHealth activities

May 2012

Rwanda Health Enterprise Architecture framework



RHEA-Individual medical records





Individual records systems

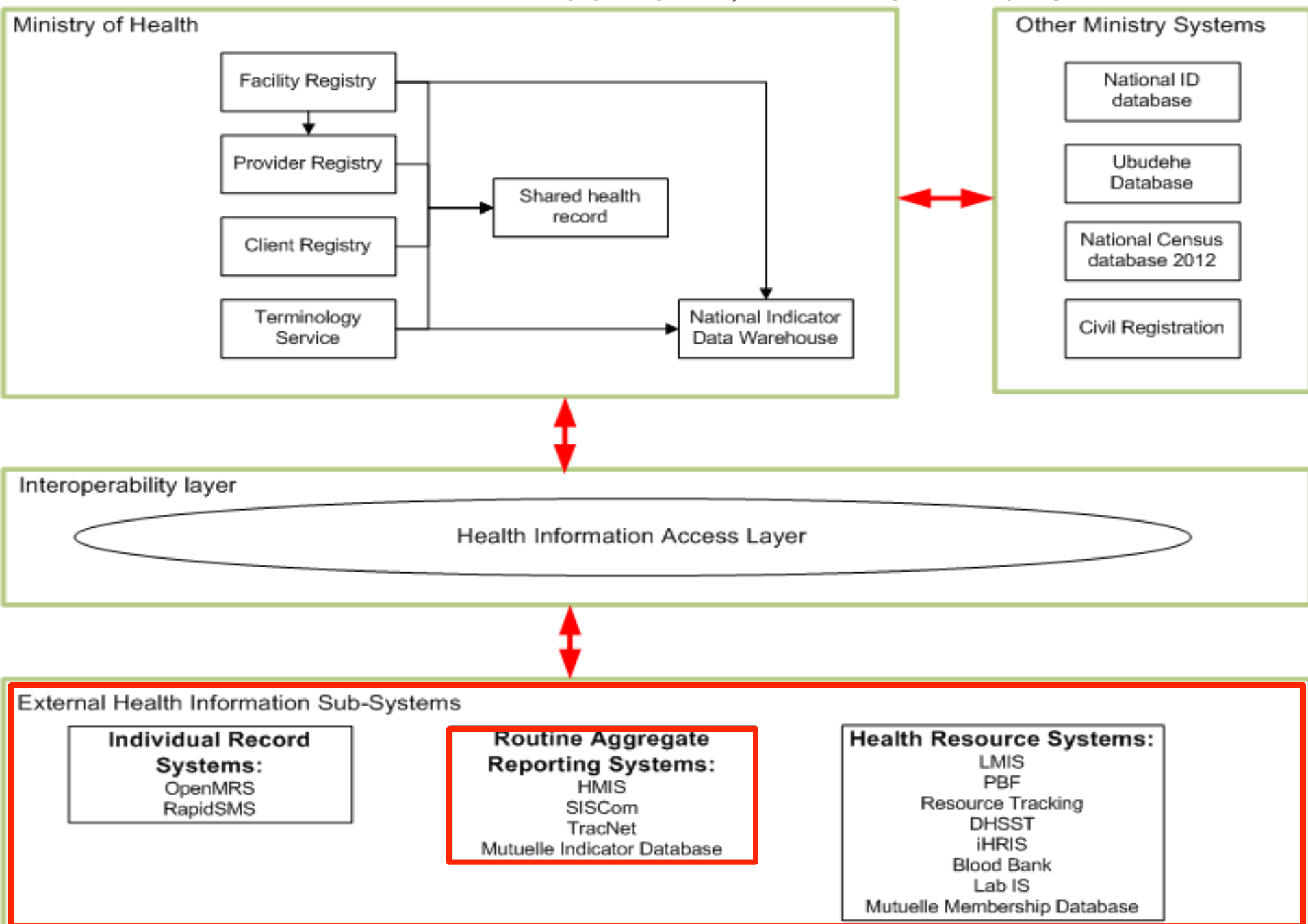
□ EMR

- 35 Health Centers operational
- 40 more Health Centers in next 2 months
- 10 Hospitals by end of 2012
- ?? sites in year 2013-depend on infrastructure

□ RapidSMS

- 1 CHW/village in 29 districts trained (one remaining)
- 21 districts now reporting using RapidSMS

RHEA-Routine aggregate/M&E reporting systems





Routine aggregate reporting systems

- HMIS
 - ▣ Fully functional for data entry since Jan 2012 – over 500 health facilities reporting every month.
 - ▣ Data managers and M&E officers trained in all Districts and health Centers
 - ▣ Mutuelle indicator reporting now built into R-HMIS
 - ▣ SISCom in transition to R-HMIS platform



Sample- Data entry screen

2 DHIS 2

hmis.moh.gov.rw/hmis/dhis-web-dataentry/index.action

Suggested Sites Web Slice Gallery Imported From IE PBF Rwanda

DHIS2 version: 01 Rwanda HMIS Maintenance Services Help Log out

Rwanda

- East
 - Bugesera District
 - Bugesera DP
 - Nyamata DH
 - Gakurazo CS
 - Gakurazo MU
 - Gashora CS
 - Gashora MU
 - Gihinga CS
 - Gihinga MU
 - Juru CS
 - Kamabuye CS
 - Kamabuye MU
 - Mareba CS
 - Mareba MU
 - Mayange (bugesera) CS
 - Mayange MU
 - Mwogo CS
 - Mwogo MU
 - Ngeruka CS
 - Ntarama CS
 - Nyamata CS
 - Nyamata MU
 - Nzangwa CS

Data Entry ?

Organisation Unit

Data Set

Period

XVI. Family Planning

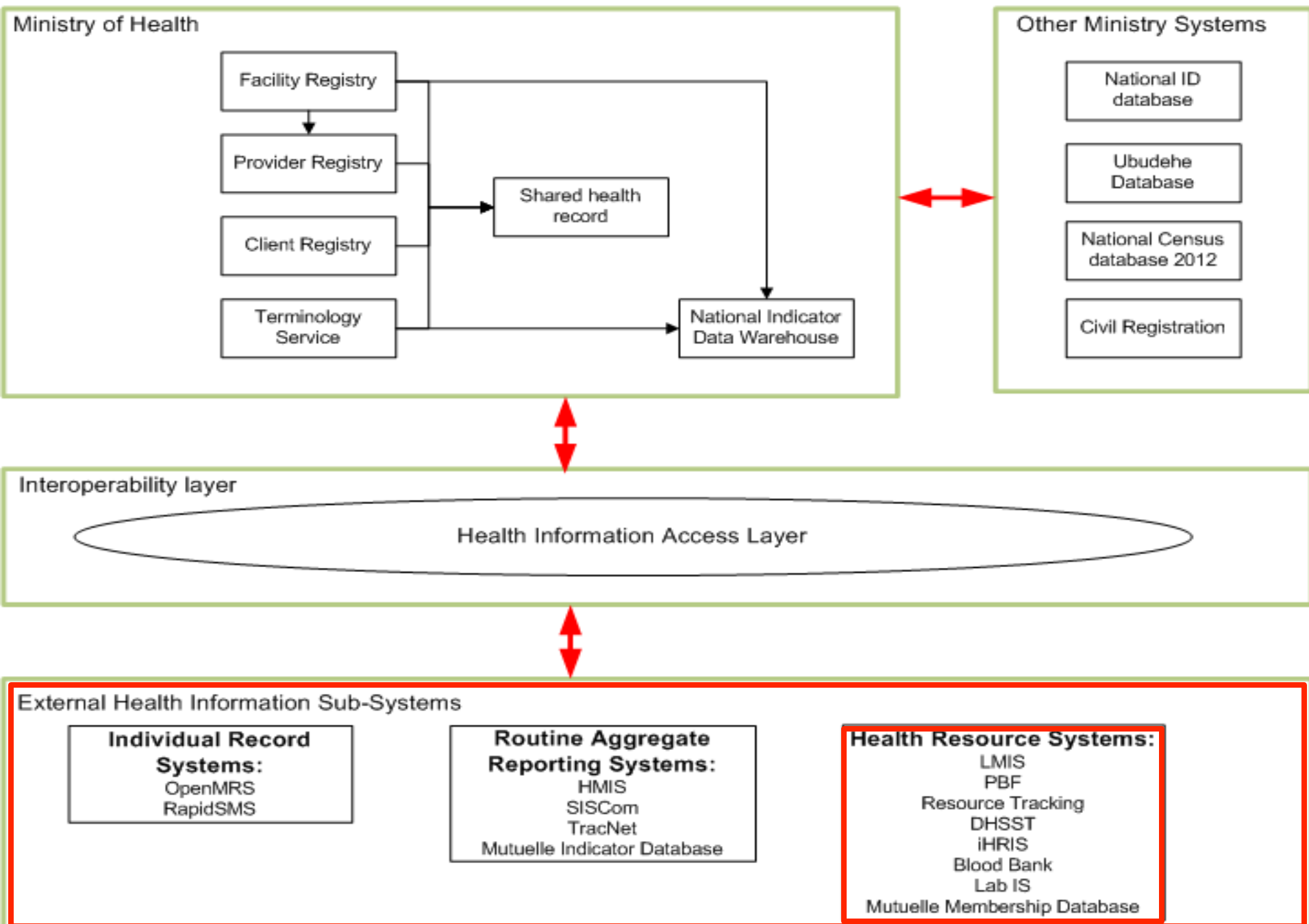
	Methods	New Acceptors	Stopped FP	Active users at end of month	Quantity distributed
1	Oral Contraceptives, progestative	<input type="text"/>	<input type="text"/>	<input type="text"/>	<input type="text"/>
2	Oral Contraceptives, combined	<input type="text"/>	<input type="text"/>	<input type="text"/>	<input type="text"/>
3	Injectables (Depo-Provera)	<input type="text"/>	<input type="text"/>	<input type="text"/>	<input type="text"/>
4	Injectables (Norristerat)	<input type="text"/>	<input type="text"/>	<input type="text"/>	<input type="text"/>
5	Implants	<input type="text"/>	<input type="text"/>	<input type="text"/>	<input type="text"/>
6	IUD	<input type="text"/>	<input type="text"/>	<input type="text"/>	<input type="text"/>



Routine aggregate reporting systems

- mUbuzima
 - ▣ 2 CHWs/village trained in 29 districts
 - ▣ 29 districts reporting using mUbuzima since April 2012
- TRACnet
 - ▣ Fully functional nationwide
- eIDSR
 - ▣ System functional in 5 districts
 - ▣ National roll out to be completed Sep 2012
- Challenges
 - ▣ Sustainability-cost and human resource

RHEA-Health Resource Systems





Health resource systems

- CBHI “Mutuelle” Membership/Ubudehe
 - ▣ Web-based mutuelle membership module is functional – linked to Ubudehe categorization database
 - ▣ Request for Proposals issued for development of mobile-phone module to maintain and authenticate membership and ubudehe data in villages without internet or computers
 - ▣ **Draft MoU with ITU/GHI (Digital Health Initiative) for end-to end insurance system**



CBHI Membership village status screen

Village Quick Audit

Village Browser

District:

Sector:

Cell:

Village:

Quick Audit Refresh Audit Print Village

Rapid Statistics

<i>Nombre de Menage</i>	322
<i>Total Population</i>	896
<i>Cat. 2010 I</i>	0
<i>Cat. 2010 II</i>	8
<i>Cat. 2010 III</i>	174
<i>Cat. 2010 IV</i>	198
<i>Cat. 2010 V</i>	46
<i>Cat. 2010 VI</i>	0
<i>unCat. 2010</i>	110 : 470
<i>Clerk Name</i>	data ent...
<i>Date Started</i>	2011-06...

Found Inconsistencies

Dependants Registration Errors

	Head of family	Tot. Dependa...	Dependants ...
1	KINYAMAHANGA	8	2
2	YOMBO Samuel	2	0
3	MAJYAMBERE	5	4
4	KABAGAMBA DENIS	7	1
5	GASHATI JEAN PAUL	6	2
6	NGOGA JEAN	6	1
7	ICYIZANYE CONSOLEE	6	5

Duplicated Entries

	Record Type	Full Name	Occurence
1	Household	NSENGIYUMVA	2
2	Household	THEONESTE	2

Missing or Critical information

	Record Type	Full N...	B. Year	Gender	Cat. 2010
1	Household	ALEXIS	1900	2	
2	Household	ANT...	1900	1	
3	Household	BAN...	1900	2	
4	Household	BARE...	1964	2	0



Health resource systems

- Human Resource Information System
 - ▣ All Health Sector HR data entered
 - ▣ To be updated regularly
 - ▣ Payroll and leave management modules to be developed
- Laboratory Information System (NRL):
Implementation in progress
- LMIS: Tender process ongoing
- Blood bank Information System: Functional in 3/5 sites. Plan is to centrally host the system



Health resource systems

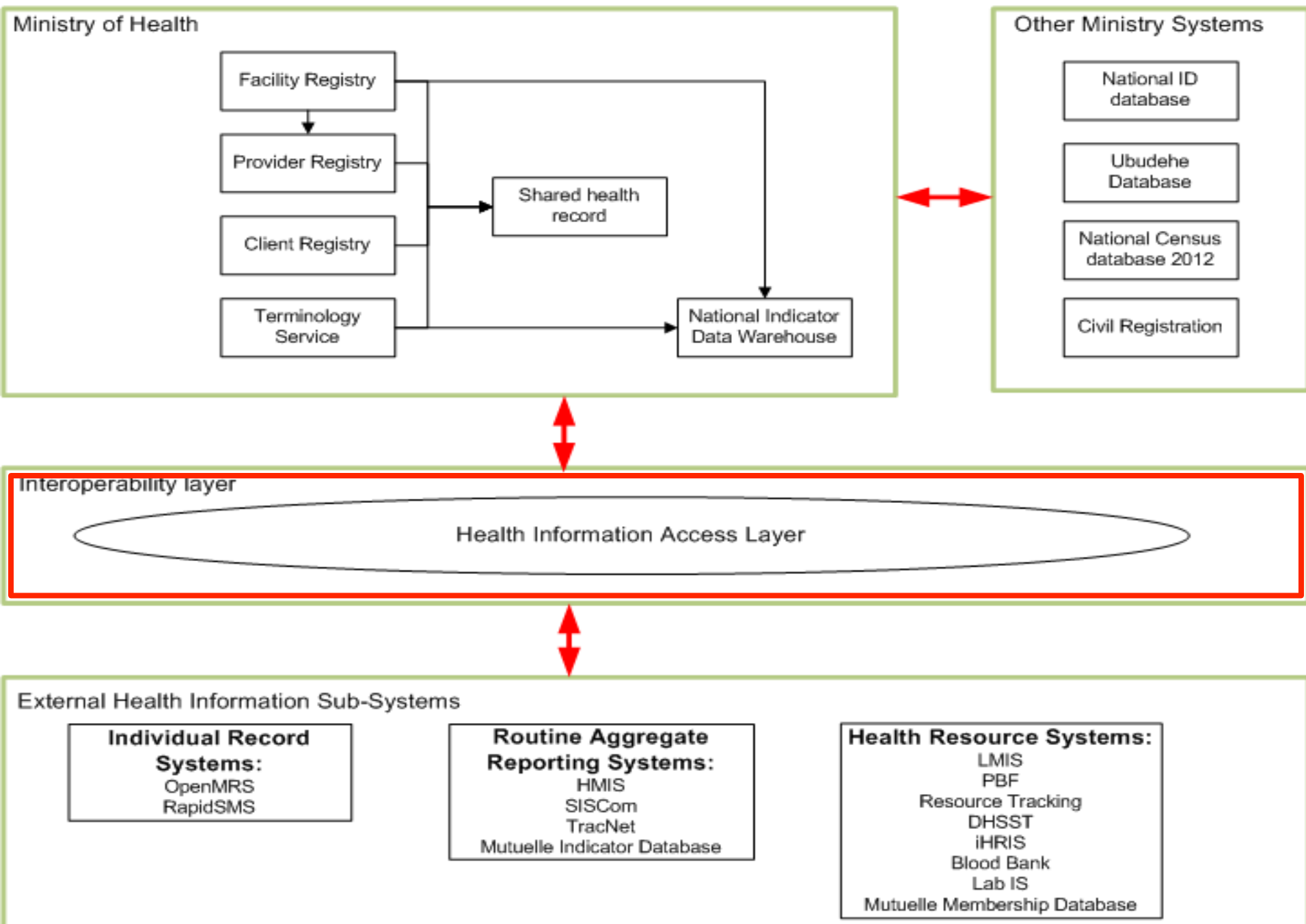
- Resource tracking: System functional, new recruitment done, need to move the system to a sustainable technology
- DHSST: data is available for use for district planning. Data collection done annually
- **Facility financial management system**



Health resource systems

- Professional council membership
 - ▣ Functional requirement completed for a consolidated membership database for nursing, medical and pharmacist councils
 - ▣ Short-term solution of Access database has been developed to enable councils to print membership cards and certificates and track payment status
 - ▣ Plan is to integrate into iHRIS

RHEA-Health Information Exchange

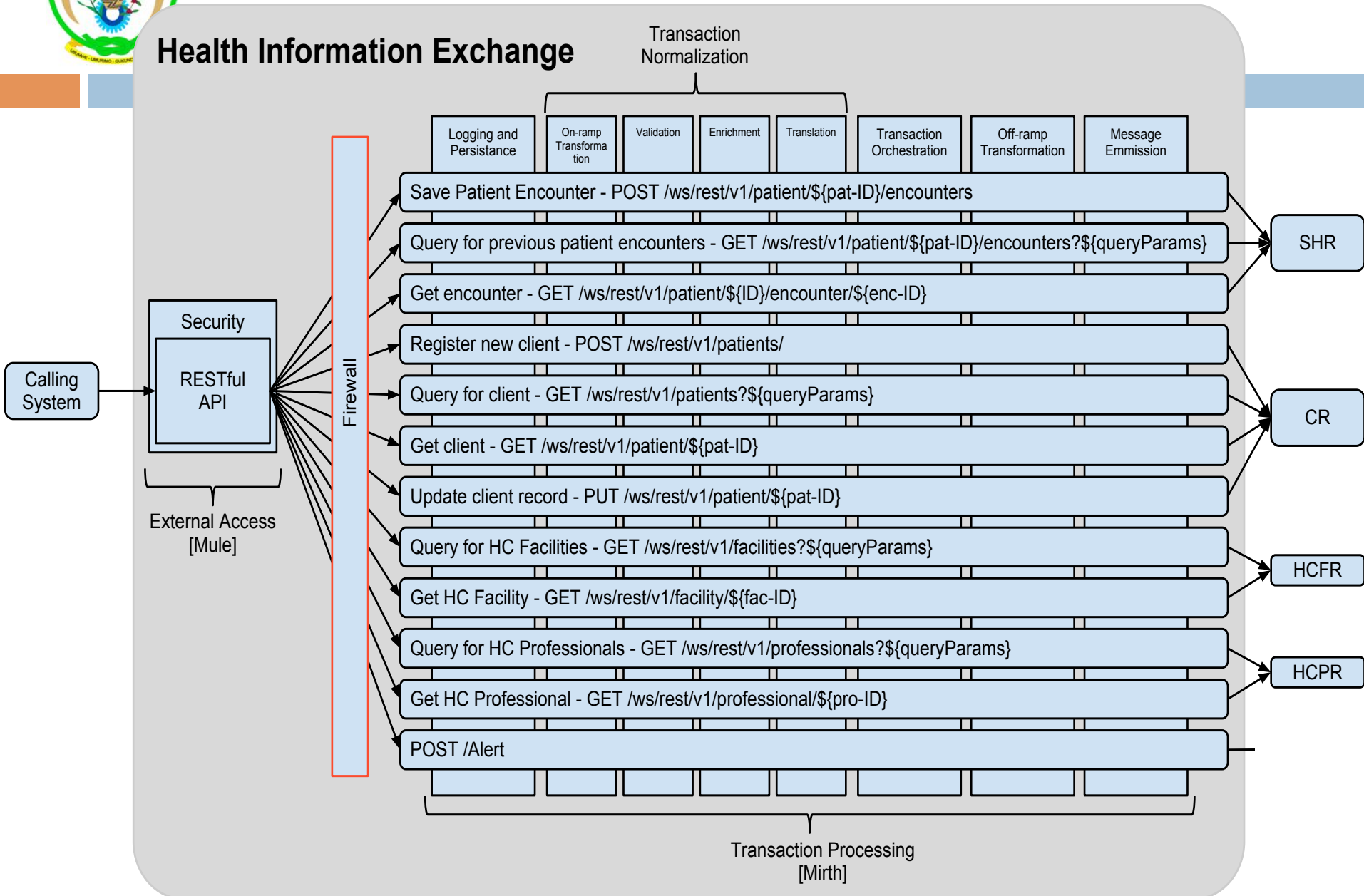




Rwanda Interoperability/Health Information Exchange layer

Health Information Exchange

Transaction Normalization

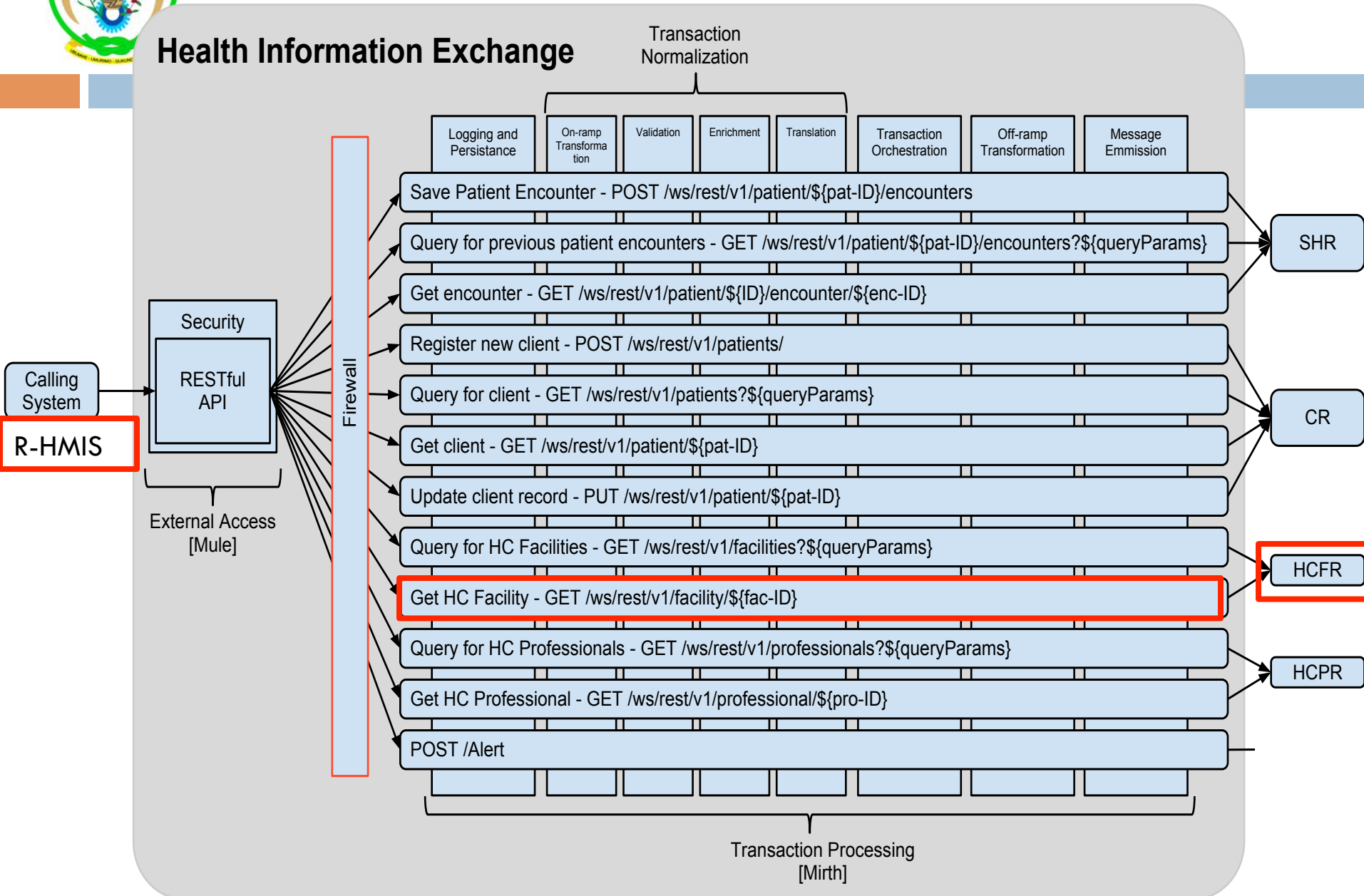




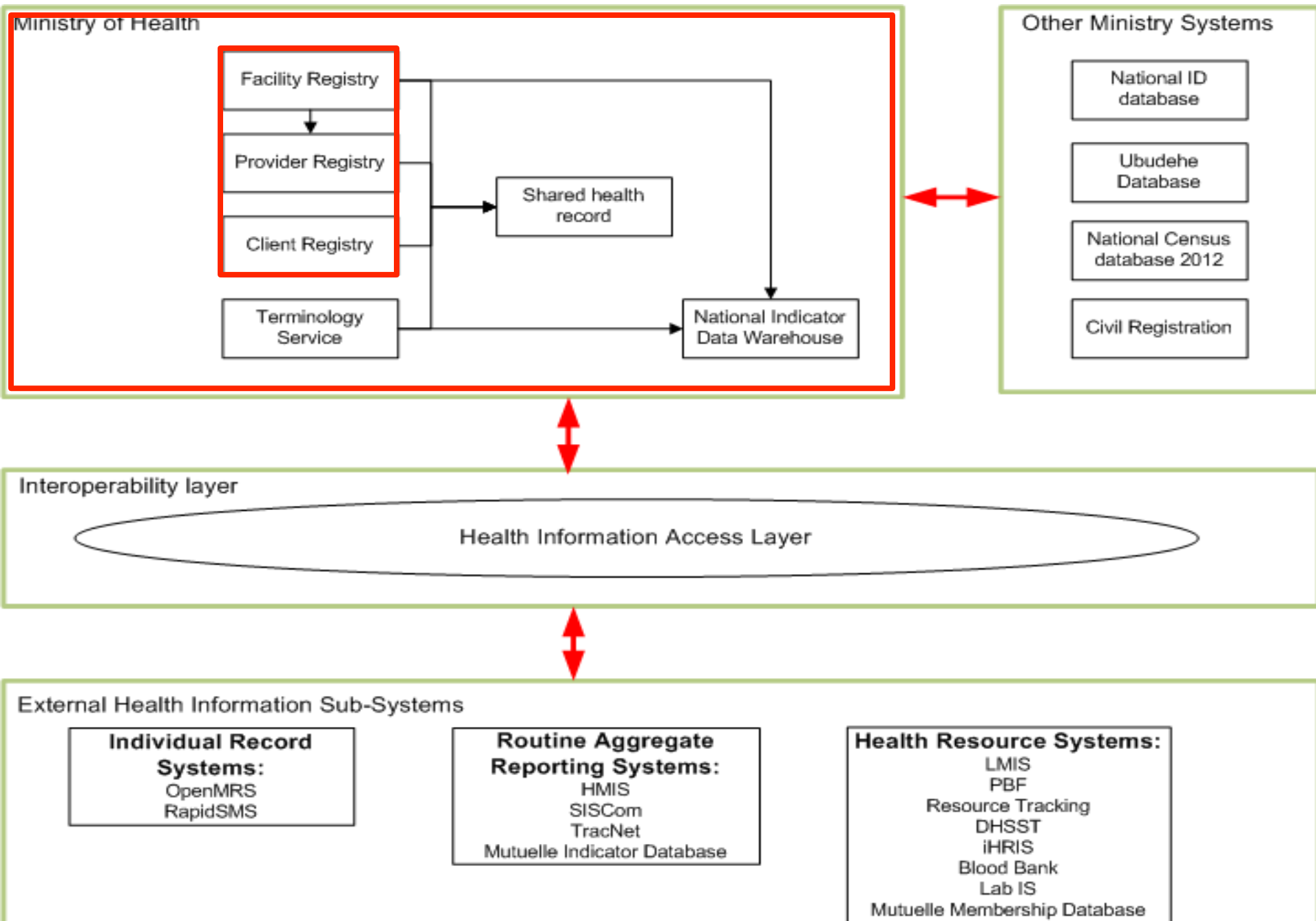
Rwanda Interoperability/Health Information Exchange layer

Health Information Exchange

Transaction Normalization



RHEA-registries

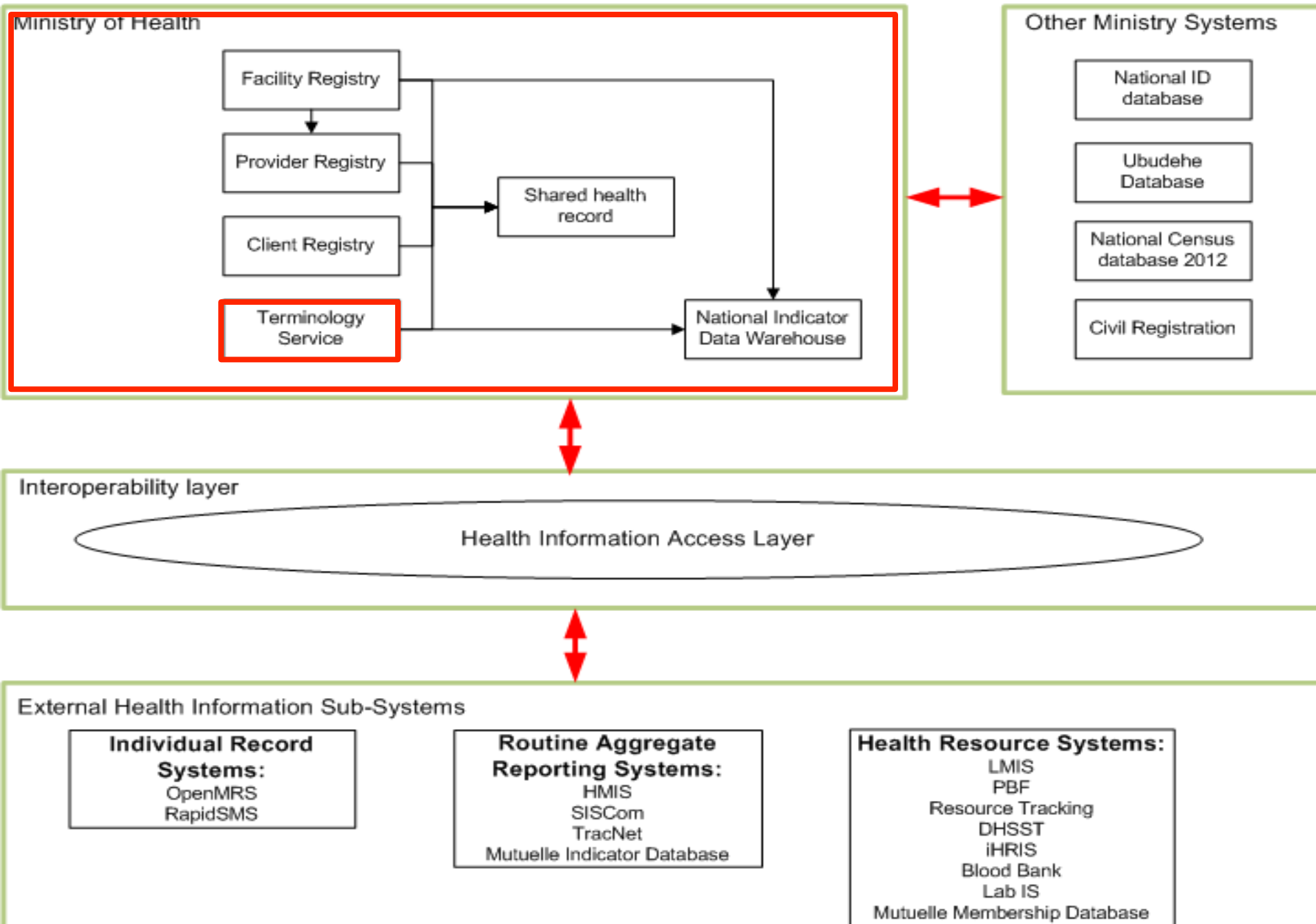




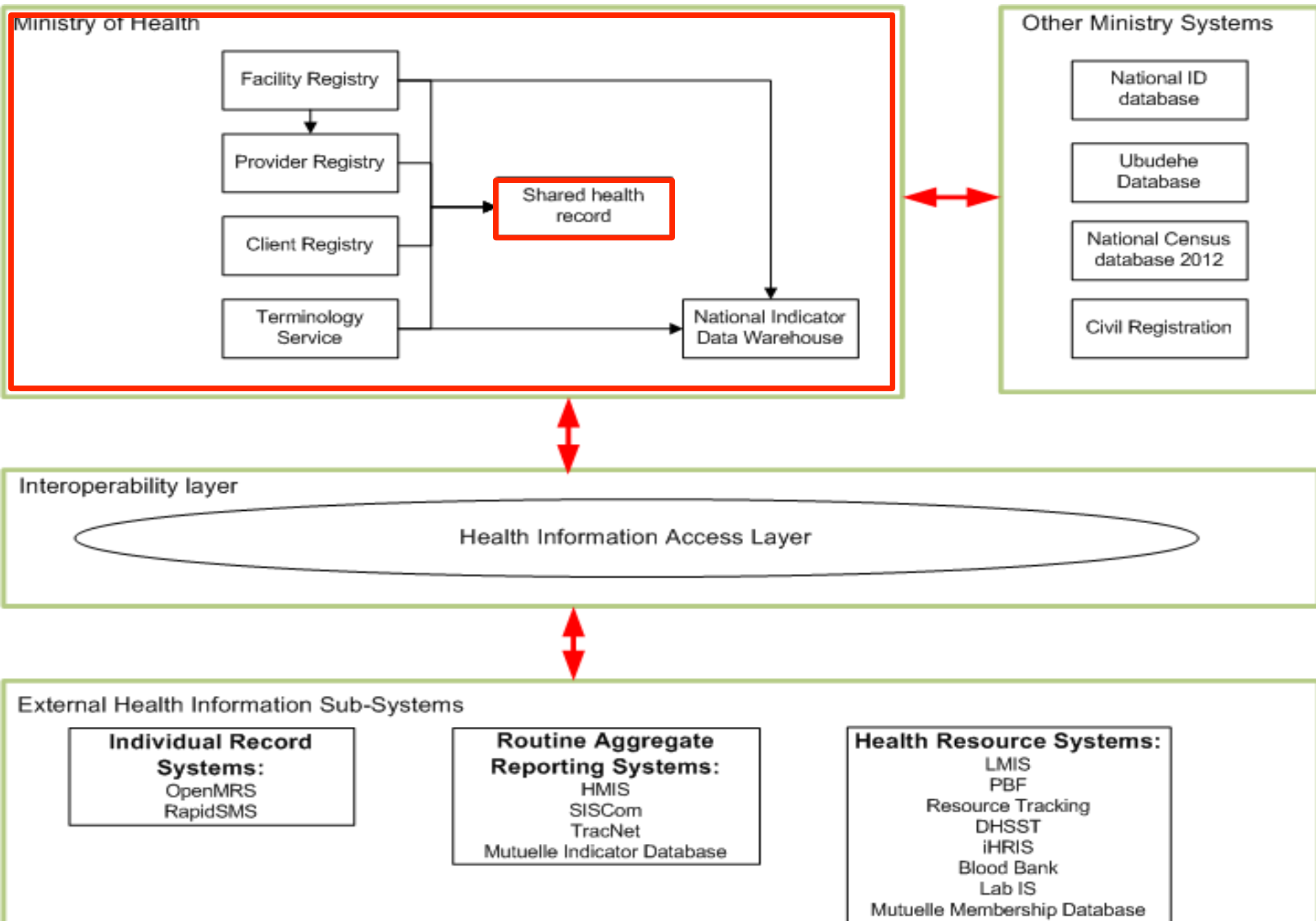
Registries

- Facility registry (Completed)
- Professional/provider registry (August 2012)
- Client registry (September 2012-development)

RHEA-Terminology service (coding)



RHEA- Shared Health Record





ICT INFRASTRUCTURE

- Equipment
- Networks
- Connectivity
- Hosting